

MayfieldEWS Wireless Internet

E-mail Installation

Every MayfieldEWS Wireless Internet subscription (except HotSpots) includes at least one e-mail account. Get information below on how to set up your e-mail account.

There are too many e-mail clients for MayfieldEWS Wireless to reliably support them all. However, the server settings below should be enough to configure most e-mail clients:

Domain name: mewsbb.net

Server type: POP3

Incoming (POP) server: mail.mewsbb.net

Outgoing (SMTP) server: mail.mewsbb.net

User ID: _____

Password: _____

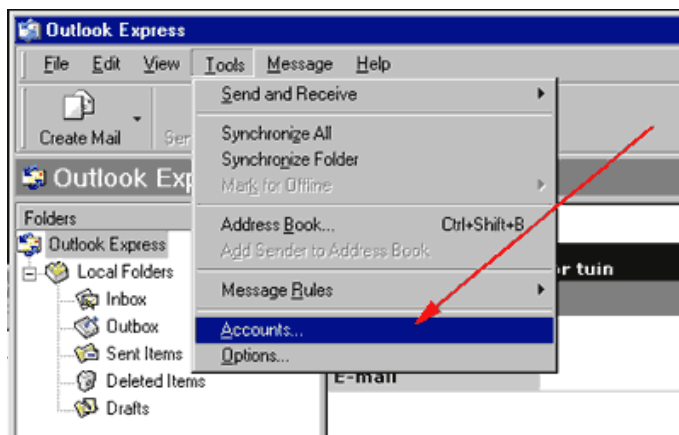
How Do I Set Up My E-mail on Outlook Express/Outlook?

Follow these instructions to set up your Outlook Express/Outlook email accounts.

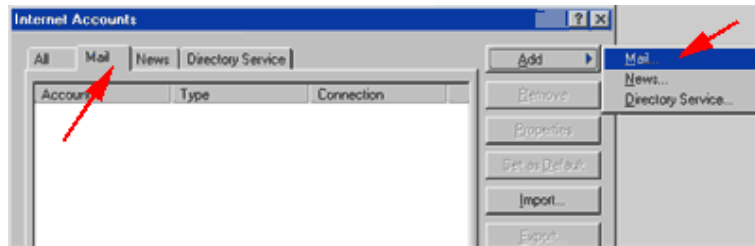
Setting up Outlook Express/Outlook

These instructions are for Outlook Express but will also work for most versions of Outlook.

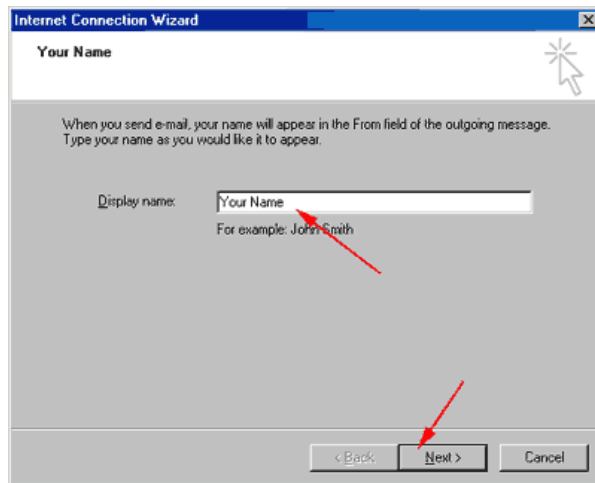
1. Launch Outlook Express.
2. Click on "Tools" menu.
3. Click on "Accounts."



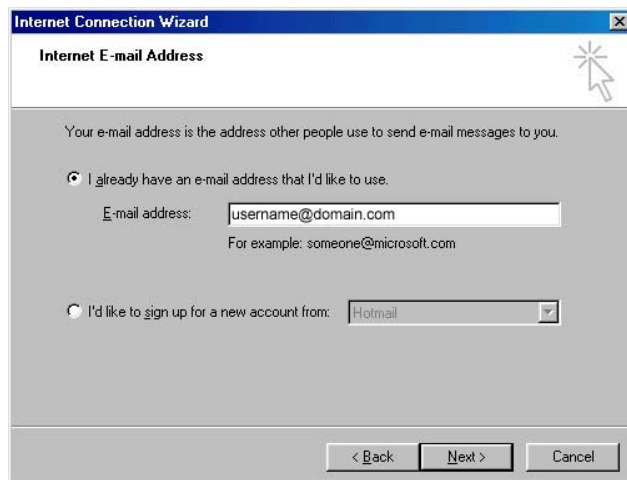
4. Click on “Mail” tab.
5. Click on “Add” and then “Mail.”



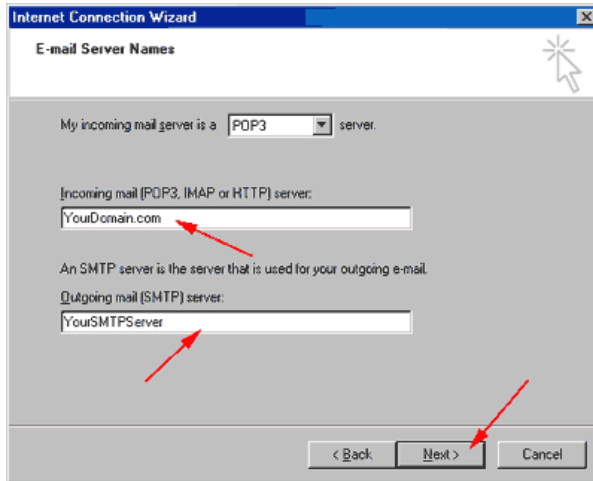
6. Enter your name in the box.
7. Click “Next.”



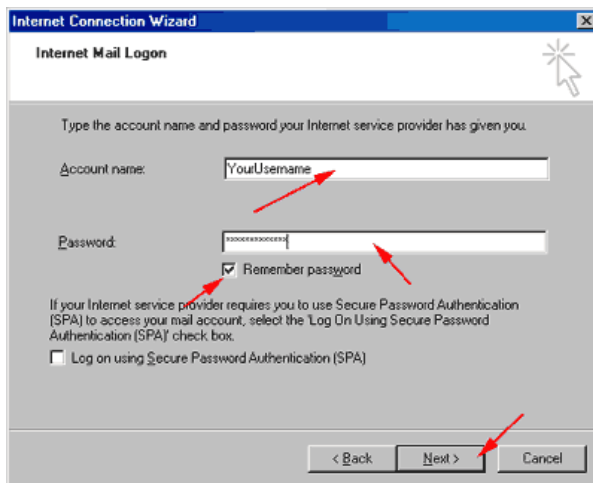
8. Enter your full email address using the following format: **Userid@mewsbb.net**.
9. Click “Next.”



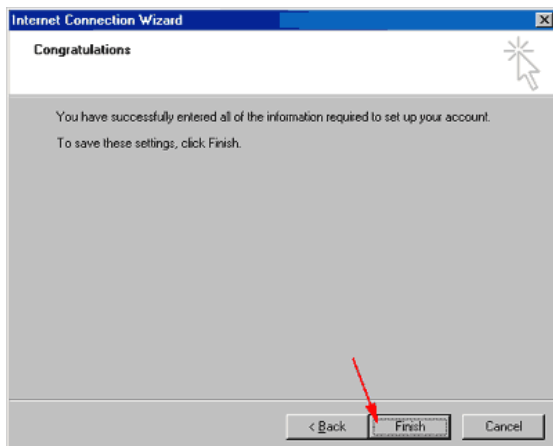
10. Enter the incoming and outgoing POP3 mail server names as: **mail.newsbb.net**.
11. Click “Next.”



12. Enter your Account name. This is your User Id.
13. Enter your Password. Passwords are case sensitive.
14. Check the “Remember Password” box.
15. Click “Next.”



16. Click “Finish” to complete setting up Outlook Express.



17. Click “Close.”

